

CERTIFIED LAND CORNER RECORDATION

DESCRIPTION OF CORNER EVIDENCE FOUND, AND ORIGINAL RECORD (If known)

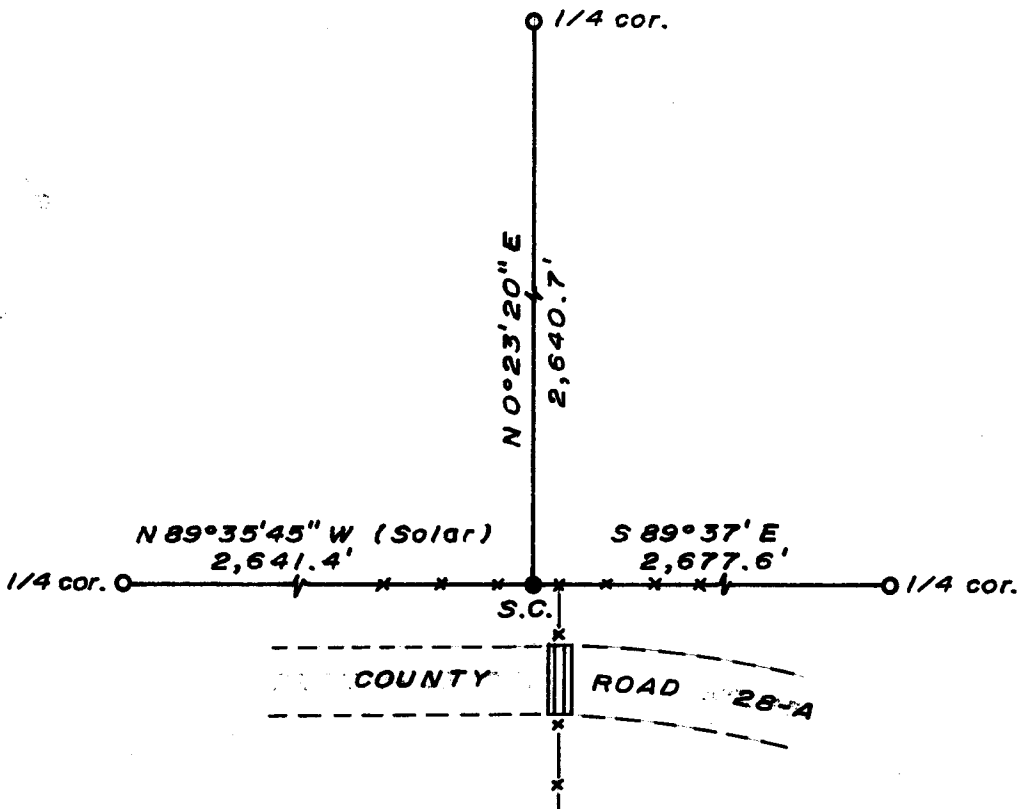
LOCATION
S.28 S.27
S.33 S.34
T.17N., R.70W.
6th P.M.

Found a 8" x 8" Granite stone with grooves, in place.
G.L.O. record - Granite boulder, 18 x 10 x 7. [John B. Thomas, 1872]

DESCRIPTION OF MONUMENT AND ACCESSORIES ESTABLISHED
TO PERPETUATE THE ORIGINAL LOCATION OF THIS CORNER:

At the corner: Set a 1½" dia. x 30" long iron pipe with brass cap.
Accessories: Placed 3½" x 4" aluminum sign on RR tie corner post, East, 5 feet distant.
Left stone as memorial.

SKETCH, WITH COURSE AND DISTANCE TO ADJACENT CORNER IF DETERMINED IN THIS SURVEY.
(May Sketch or Paste Reproduction on Reverse Side.)



Brass cap set 6" above ground.
Brass cap stamped:
T.17N. R.70W.
S.C.
S.28 S.27
S.33 S.34
LS 519 1975

I, R.L. Hudson certify that I have carefully performed or reviewed the work done on the diagrammed corner as reported on this recordation form and approve the same.

R.L. Hudson Wyoming L.S. No. 519
Signature of Surveyor Registration No.

STATE OF WYOMING,
Office of Clerk and Recorder,
County of Sarasota

This "corner record" was filed for record on the 20 day of August, 1975, was noted on the cross-index plat and is assigned page No. _____, in book No. _____.

Janet E. Whitehead
County Official

Cross Index No. <u>V-13</u>	T. <u>17</u>	R. <u>70</u>	Mer.
_____	T. _____	R. _____	Mer.
_____	T. _____	R. _____	Mer.
_____	T. _____	R. _____	Mer.
_____	T. _____	R. _____	Mer.
_____	T. _____	R. _____	Mer.
_____	T. _____	R. _____	Mer.

The State of Wyoming
County of Laramie } \$

This instrument was filed for record
at 2:10 o'clock P M on the
A. D. 19 71 day of August
book _____ on page _____ and duly recorded in

James C. Mitchell

County Clerk & Ex-Officio Register of Deeds
By _____